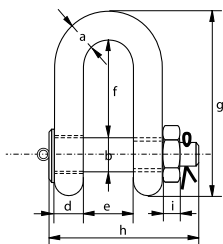


P-6038



Green Pin® Heavy Duty Dee Shackle BN

High load capacity dee shackle with safety bolt

- **Material:** bow and pin alloy steel, grade 8 quenched and tempered
- **Safety Factor:** MBL equals 5 x WLL
- **Standard:** ASME B30.26
- **Finish:** painted
- **Temperature range:** -40 °C up to +200 °C
- **Certification:** 2.1 2.2 3.1 MTC^a CE IIA **Optional:** MTC^a LROS MPI^a US^a
- **Article code:** scan QR code to see article codes

Scan for additional product details



working load limit	diameter bow	diameter pin	diameter eye	width eye	width inside	length inside	length	length bolt	thickness nut	weight pin	weight each
t	a	b	c	d	e	f	g	h	i	kg	kg
120	95	95	204	95	147	274	520	440	50	28.1	110

CAD RFID

* With additional charges