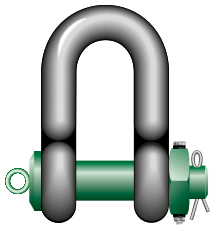




Green Pin® Heavy Duty Dee Shackle FN

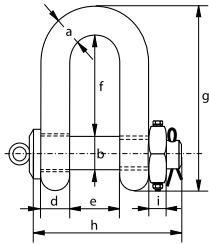
High load capacity dee shackle with safety bolt and fixed nut

Scan for additional product details



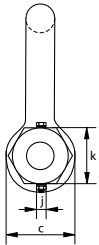
- **Material:** bow and pin alloy steel, grade 8, quenched and tempered
- **Safety Factor:** MBL equals 5 x WLL
- **Standard:** ASME B30.26
- **Finish:** painted
- **Temperature range:** -40 °C up to +200 °C ≤ WLL 600 t
- **Certification:** 2.1 2.2 3.1 MTC^a CE IIA **Optional:** MTC^b LROS MPI^a US^a
- **Article code:** scan QR code to see article codes

P-6018



working load limit	diameter bow	diameter pin	diameter eye	width eye	width inside	length inside	length	length bolt	thickness nut	securing bolt thread	securing bolt length	torque	weight pin	weight each
t	a mm	b mm	c mm	d mm	e mm	f mm	g mm	h mm	i mm	j mm	k mm	Nm	kg	kg
120	95	95	204	95	147	274	520	440	50	M12	150	68	28.1	97

CAD RFID INFO



* With additional charges