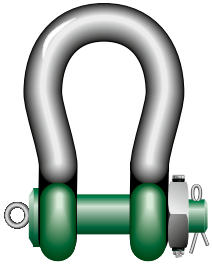




# Green Pin Polar® Heavy Duty Bow Shackle FN

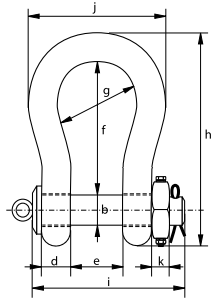
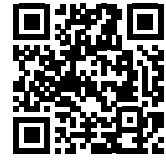
High load capacity, grade 8 bow shackle with safety bolt and fixed nut for use under low temperatures

Scan for additional product details



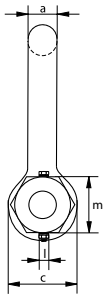
P-6011

- **Material:** bow and pin alloy steel, grade 8, quenched and tempered
- **Safety Factor:** MBL equals 5 x WLL
- **Standard:** ASME B30.26
- **Finish:** shackle bow painted silver, pin painted green
- **Temperature range:** -40 °C up to +200 °C
- **Certification:** 2.1 2.2 3.1 MTC<sup>a</sup> LROS<sup>\*</sup> CE IIA
- **Article code:** scan QR code to see article codes



working load limit	diameter bow	diameter pin	diameter eye	width eye	width inside	length inside	width bow	length	length bolt	width	thickness nut	securing bolt thread	securing bolt length	torque	weight pin	weight each
t	a	b	c	d	e	f	g	h	i	j	k	l	m	Nm	kg	kg
120	95	95	204	95	147	400	238	644	453	428	50	M12	150	68	28.1	110
150	105	108	235	105	169	410	275	686	496	485	50	M12	160	68	39.2	160

CAD RFID INFO



\* For shackles ≥ WLL 120 t available with or without LROS