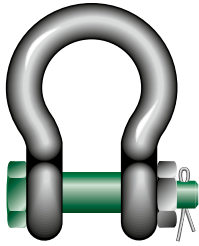




Green Pin® Bow Shackle BN

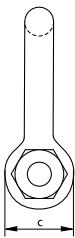
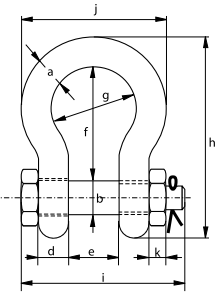
Standard bow shackle with safety bolt

Scan for additional product details



- **Material:** bow and pin high tensile steel, grade 6, quenched and tempered
- **Safety Factor:** MBL equals 6 x WLL
- **Standard:** ISO 2415, EN 13889 and meets performance requirements of US Fed. Spec. RR-C-271 Type IVA Class 3, grade A, from 2 t and upward these shackles comply with ASME B30.26
- **Finish:** hot dipped galvanized
- **Temperature Range:** -40 °C up to +200 °C
- **Certification:** [2.1](#) [2.2](#) [3.1](#) [MTC^a](#) [DNV 2.7-1^a*](#) [DNV 2.7-1^b*](#) [DNV 0378](#) [CE IIA](#) [ABS PDA](#) [ABS MA](#)
- **Article code:** scan QR code to see article codes

G-4163



| working load limit | diameter bow | diameter pin | diameter eye | width eye | width inside | length inside | width bow | length | length bolt | width | thickness nut | weight each |
|--------------------|--------------|--------------|--------------|-----------|--------------|---------------|-----------|--------|-------------|-------|---------------|-------------|
| t | a mm | b mm | c mm | d mm | e mm | f mm | g mm | h mm | i mm | j mm | k mm | kg |
| 0.5 | 7 | 8 | 16 | 7 | 12 | 29 | 20 | 48 | 42 | 34 | 4 | 0.06 |
| 0.75 | 9 | 10 | 20 | 9 | 13.5 | 32 | 22 | 56 | 50 | 40 | 5 | 0.11 |
| 1 | 10 | 11 | 23 | 10 | 17 | 37 | 26 | 64 | 60 | 46 | 8 | 0.16 |
| 1.5 | 11 | 13 | 25 | 11 | 19 | 43 | 29 | 73 | 67 | 51 | 11 | 0.22 |
| 2 | 13.5 | 16 | 34 | 13 | 22 | 51 | 32 | 90 | 80 | 59 | 13 | 0.42 |
| 3.25 | 16 | 19 | 40 | 16 | 27 | 64 | 43 | 110 | 98 | 75 | 17 | 0.74 |
| 4.75 | 19 | 22 | 46 | 19 | 31 | 76 | 51 | 129 | 115 | 89 | 19 | 1.18 |
| 6.5 | 22 | 25 | 52 | 22 | 36 | 83 | 58 | 144 | 130 | 102 | 22 | 1.77 |
| 8.5 | 25 | 28 | 59 | 25 | 43 | 95 | 68 | 164 | 150 | 118 | 25 | 2.58 |
| 9.5 | 28 | 32 | 67 | 28 | 47 | 108 | 75 | 186 | 166 | 131 | 27 | 3.66 |
| 12 | 32 | 35 | 73 | 32 | 51 | 115 | 83 | 201 | 184 | 147 | 30 | 4.91 |
| 13.5 | 35 | 38 | 79 | 35 | 57 | 133 | 92 | 227 | 197 | 162 | 33 | 6.54 |
| 17 | 38 | 42 | 88 | 38 | 60 | 146 | 99 | 249 | 202 | 175 | 19 | 8.19 |
| 25 | 45 | 50 | 104 | 45 | 74 | 178 | 126 | 300 | 243 | 216 | 23 | 14 |
| 35 | 50 | 57 | 112 | 50 | 83 | 197 | 138 | 332 | 269 | 238 | 26 | 18.8 |
| 42.5 | 57 | 65 | 132 | 57 | 95 | 222 | 160 | 378 | 301 | 274 | 29 | 28.3 |
| 55 | 65 | 70 | 145 | 65 | 105 | 260 | 180 | 433 | 329 | 310 | 32 | 39.6 |
| 85 | 75 | 83 | 167 | 75 | 127 | 330 | 190 | 530 | 381 | 340 | 39 | 62 |

CAD RFID INFO



* For shackles ≥ WLL 2 t