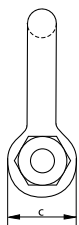
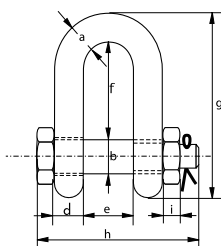


G-4153



## Green Pin® Dee Shackle BN

### Standard dee shackle with safety bolt

- **Material:** bow and pin high tensile steel, grade 6, quenched and tempered
- **Safety Factor:** MBL equals 6 x WLL
- **Standard:** ISO 2415, EN 13889, ASME B30.26 and meets performance requirements of US Fed. Spec. RR-C-271 Type IVB Class 3, grade A
- **Finish:** hot dipped galvanized
- **Temperature Range:** -40 °C up to +200 °C
- **Certification:** 2.1 2.2 3.1 MTC<sup>®</sup> DNV 2.7-1<sup>®</sup> \* DNV 2.7-1<sup>®</sup> \* DNV 0378 CE IIA ABS PDA ABS MA
- **Article code:** scan QR code to see article codes

Scan for additional product details



working load limit	diameter bow	diameter pin	diameter eye	width eye	width inside	length inside	length	length bolt	thickness nut	weight each
t	a mm	b mm	c mm	d mm	e mm	f mm	g mm	h mm	i mm	kg
2	13.5	16	34	13	22	43	82	80	13	0.39
3.25	16	19	40	16	27	51	97	98	17	0.67
4.75	19	22	46	19	31	59	112	115	19	1.08
6.5	22	25	52	22	36	73	134	130	22	1.66
8.5	25	28	59	25	43	85	154	150	25	2.46
9.5	28	32	67	28	47	90	168	166	27	3.40
12	32	35	73	32	51	94	180	184	30	4.51
13.5	35	38	79	35	57	115	209	197	33	6.10
17	38	42	88	38	60	127	230	202	19	7.63
25	45	50	104	45	74	149	271	243	23	12.9
35	50	57	112	50	83	171	306	269	26	17.4
42.5	57	65	132	57	95	190	346	301	29	25.9
55	65	70	145	65	105	203	376	329	32	35.3
85	75	83	167	75	127	229	429	381	39	53

CAD RFID INFO



\* For shackles  $\geq$  WLL 2 t