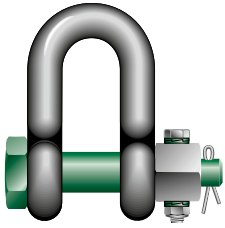




# Green Pin® Dee Shackle FN

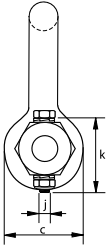
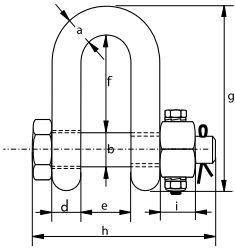
## Standard dee shackle with safety bolt and fixed nut

Scan for additional product details



- **Material:** bow and pin high tensile steel, grade 6, quenched and tempered
- **Safety Factor:** MBL equals 6 x WLL
- **Standard:** ISO 2415, EN 13889, ASME B30.26 and meets performance requirements of US Fed. Spec. RR-C-271 Type IVB Class 3, grade A
- **Finish:** hot dipped galvanized
- **Temperature Range:** -40 °C up to +200 °C
- **Certification:** 2.1 2.2 3.1 MTC<sup>a</sup> DNV 2.7-1<sup>a</sup> DNV 2.7-1<sup>b</sup> CE IIA
- **Article code:** scan QR code to see article codes

G-4133



working load limit	diameter bow	diameter pin	diameter eye	width eye	width inside	length inside	length	length bolt	thickness nut	securing bolt thread	securing bolt length	torque	weight each
t	a mm	b mm	c mm	d mm	e mm	f mm	g mm	h mm	i mm	j mm	k mm	Nm	kg
2	13.5	16	34	13	22	43	82	80	13	M6	35	8.4	0.39
3.25	16	19	40	16	27	51	97	98	17	M6	40	8.4	0.67
4.75	19	22	46	19	31	59	112	115	19	M6	45	8.4	1.08
6.5	22	25	52	22	36	73	134	130	22	M8	50	20	1.66
8.5	25	28	59	25	43	85	154	150	25	M8	55	20	2.46
9.5	28	32	67	28	47	90	168	166	27	M10	60	39	3.40
12	32	35	73	32	51	94	180	184	30	M10	65	39	4.51
13.5	35	38	79	35	57	115	209	197	33	M10	70	39	6.10
17	38	42	88	38	60	127	230	202	19	M8	75	20	7.63
25	45	50	104	45	74	149	271	243	23	M8	90	20	13.3
35	50	57	112	50	83	171	306	269	26	M10	100	39	18.5
42.5	57	65	132	57	95	190	346	301	29	M12	110	68	25.9
55	65	70	145	65	105	203	376	329	32	M12	120	68	35.3
85	75	83	167	75	127	229	429	381	39	M12	140	68	53

CAD RFID INFO

